

Endodontics Mentorship Program

Practical skills to improve your endodontics



Dr Jeff Ward

BDS, MDS, GradDipClinDent, MRACDS(Endo), FPFA

12 CPD HOURS

VENUE

Online Interactive Session

DATE

19 April 2021
17 May 2021
21 June 2021
12 July 2021
23 August 2021
4 October 2021

TIME

Start 5.00PM
Finish 7.00PM

COST

\$650 Early bird
\$750 Full price

Register before
1 April 2021 to receive
the Early Bird price.

All prices include GST.

MAXIMUM
PARTICIPANTS

12

COURSE OUTLINE

Modern endodontic treatment has many technological advances that all help in achieving excellent success rates. Jeff's Endodontic Mentorship Program will demonstrate the importance of CBCT imaging, enhanced magnification and illumination, root canal irrigation and will discuss new metallurgy and techniques in rotary instrumentation for achieving predictable endodontic success.

COURSE TOPICS

- The importance of a correct diagnosis and the use of clinical tests and contemporary imaging techniques such as high volume, low field of view CBCT scans
- Conservative access preparations and dentine preservation
- The latest rotary NiTi technology and innovation
- Strategies to consistently achieve accuracy with electronic apex locators
- How to achieve optimal disinfection of the root canal system
- Obturation techniques to achieve predictability and consistency

DR JEFF WARD

Jeff has worked in specialist endodontic practice in Melbourne since 2002. Jeff also teaches clinical endodontics at the Melbourne Dental School and he lectures on various endodontic topics for universities throughout Australia, Asia and New Zealand.

Jeff has a special interest in rotary NiTi instruments, the removal of fractured endodontic instruments and the use of operative microscopes in endodontics.

LEARNING OBJECTIVES

Diagnosis and treatment planning using the appropriate principles, tests and modern technology

Understanding conservative access design using magnification and imaging

Locating difficult anatomy e.g. MB2 canals, bifurcating canals

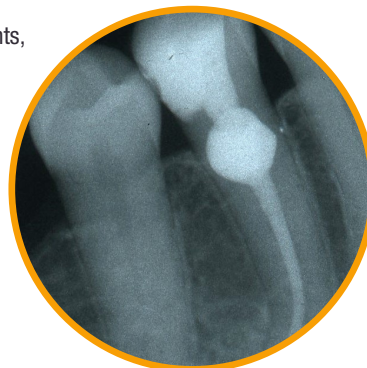
Understand the evolution of rotary NiTi instruments and endodontic motor design to understand which instruments best suit which cases

Appreciate the importance of irrigation and how to maximise its effect

Use modern techniques to achieve predictable obturation

WHAT TO EXPECT

- All Sessions will be conducted online via our secured network
- There will be 2 hours mentoring session, once a month for 6 months
- 2 participants each send in a case study in advance for the upcoming session
- 30 minutes of Course Topics and Learning Objectives
- 30 minutes per participants on their case studies
- 30 minutes of Q&A



T: 1300 302 421
E: events@henryschein.com.au

Register online at
dentaeducationhub.com.au/courses

